

## Installing XenServer on VMWare Workstation 6.5

New Virtual Machine Wizard [Send Feedback](#) ✕

**Select a Guest Operating System**  
Which operating system will be installed on this virtual machine?

Guest operating system

Microsoft Windows  
 Linux  
 Novell NetWare  
 Sun Solaris  
 Other

Version

Other 64-bit

New Virtual Machine Wizard [Send Feedback](#) ✕

**Name the Virtual Machine**  
What name would you like to use for this virtual machine?


Virtual machine name

XenServer 5

Location

C:\Virtual Machines\XenServer 5

The default location can be changed at Edit > Preferences.

New Virtual Machine Wizard Send Feedback 


### Processor Configuration

Specify the number of processors for this virtual machine.

Processors

Number of processors:  **One**  
 Two

Help < Back Next > Cancel

New Virtual Machine Wizard Send Feedback 


### Memory for the Virtual Machine



How much memory would you like to use for this virtual machine?




Memory

Specify the amount of memory allocated to this virtual machine. The memory size must be a multiple of 4 MB.

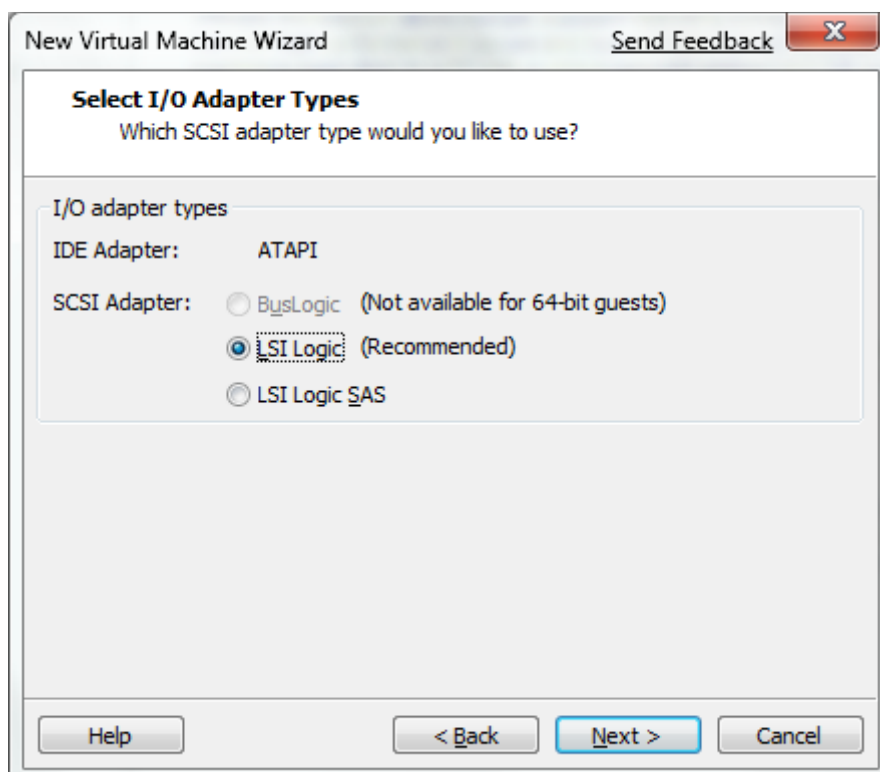
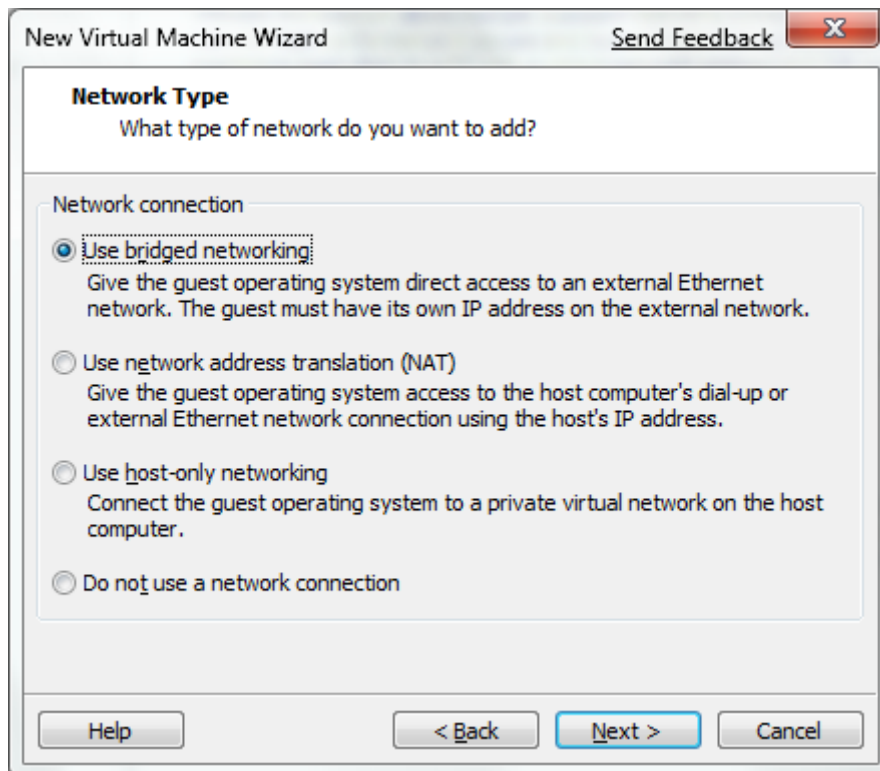
Memory for this virtual machine:

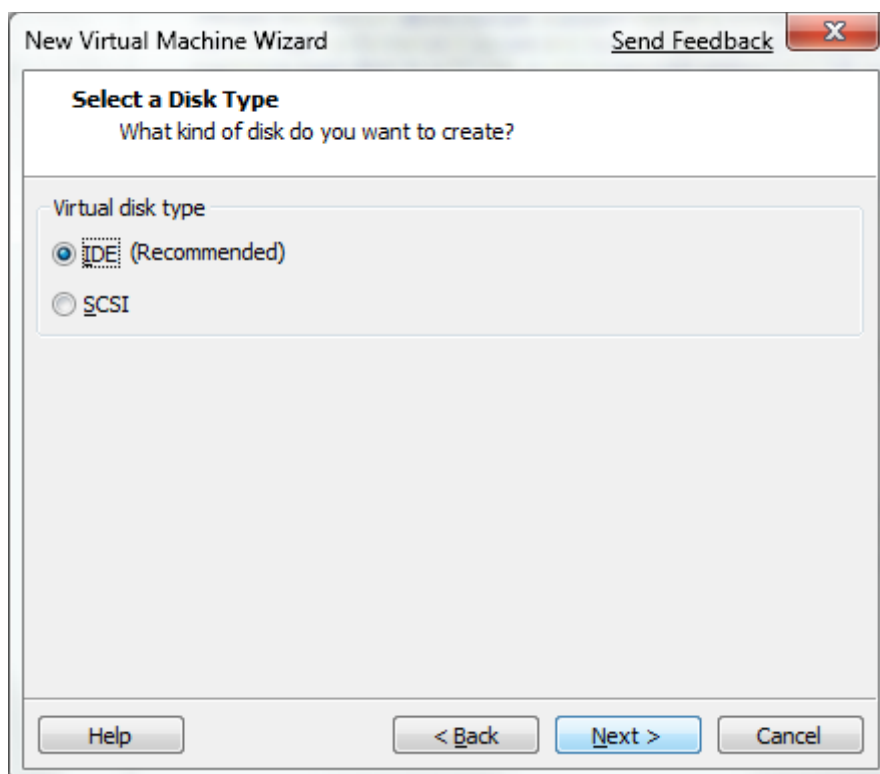
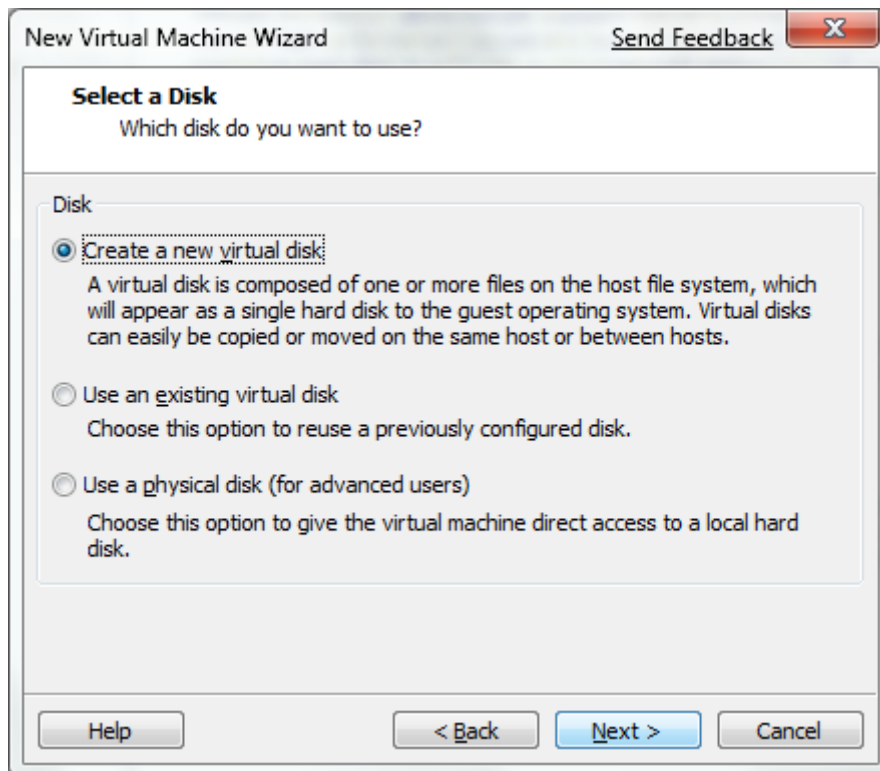
 1024 MB


4   3684

-  Guest OS recommended minimum: 32 MB
-  Recommended memory: 256 MB
-  Maximum recommended memory: 1740 MB

Help < Back Next > Cancel





New Virtual Machine Wizard Send Feedback 

### Specify Disk Capacity

How large do you want this disk to be?

Maximum disk size (GB):

Recommended size for Other 64-bit: 8 GB


Allocate all disk space now.


Allocating the full capacity can enhance performance but requires as much physical disk space as you specify for the virtual disk. If you do not allocate all disk space now, the virtual disk starts small and is created quickly. It grows as you add applications, files and data.

Store virtual disk as a single file

Split virtual disk into 2 GB files

Splitting the disk makes it easier to move the virtual machine to another computer.

 [Pocket ACE size calculator](#)

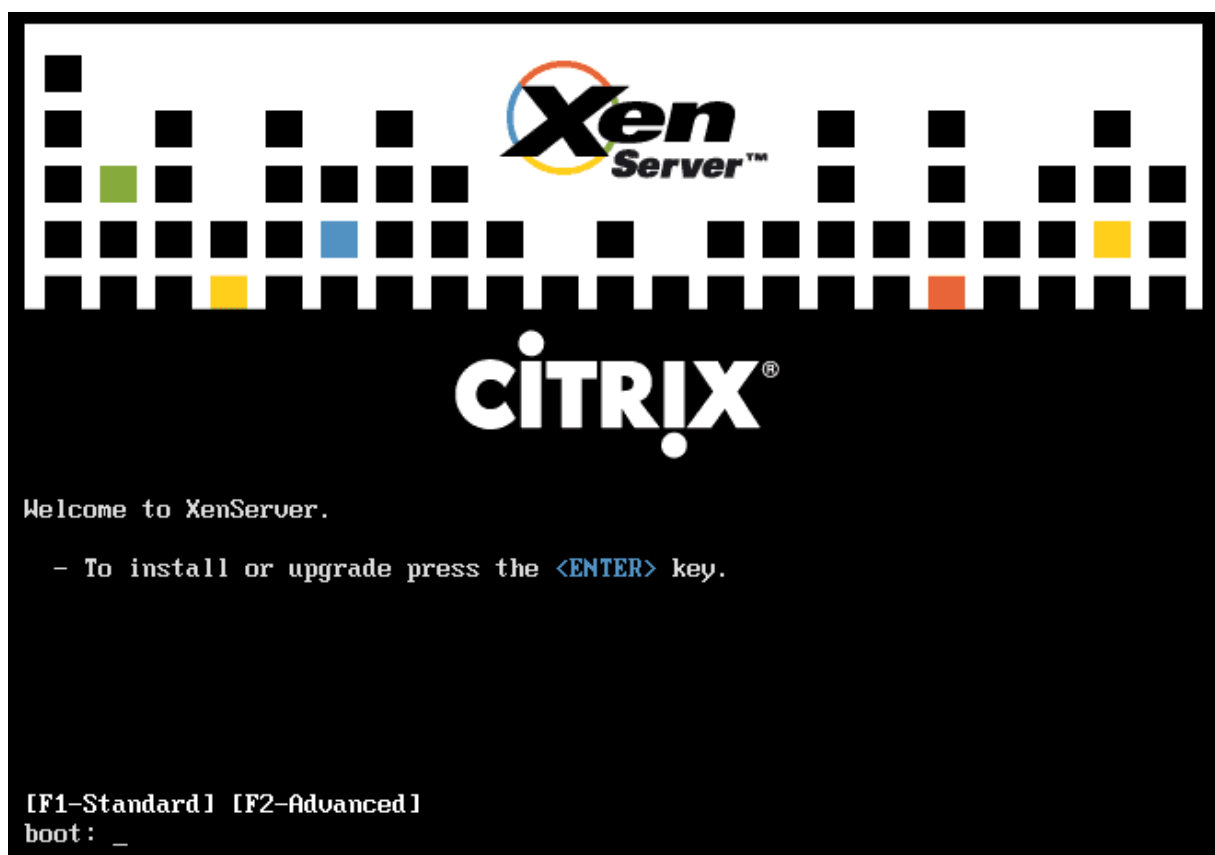
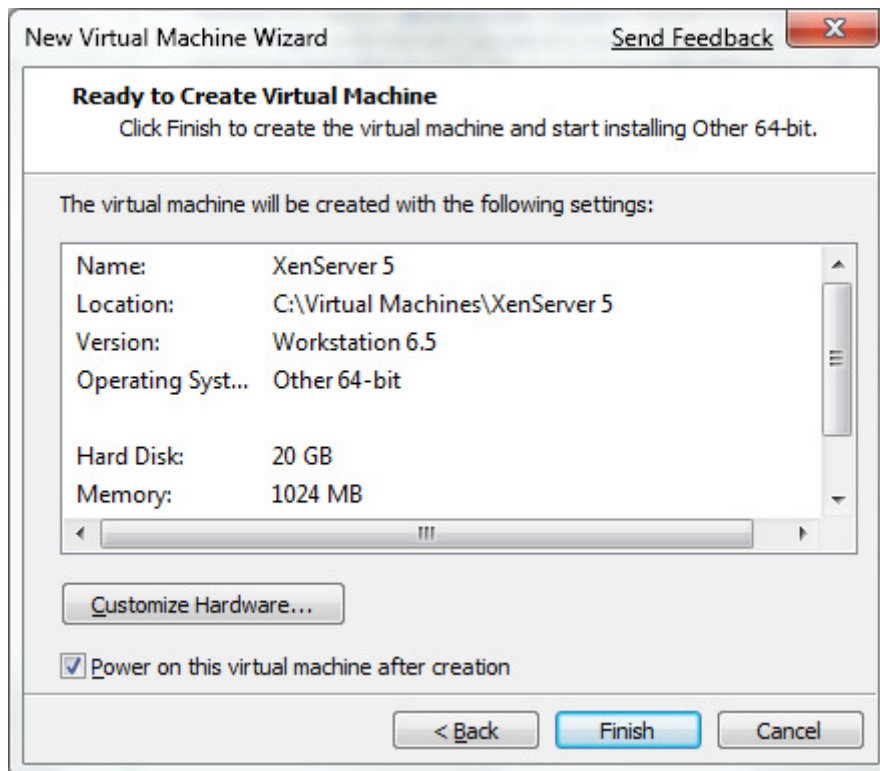
New Virtual Machine Wizard Send Feedback 

### Specify Disk File

Where would you like to store information about this disk?

Disk File

One 20 GB disk file will be created using the file name provided here.



Press OK

Welcome to XenServer - Version 5.0.0 (#10918p)  
Copyright (c) 2008 Citrix Systems, Inc.

### System Hardware

The following problem(s) were found with your hardware:

Hardware virtualization assist support is not available on this system. Either it is not present, or is disabled in the system's BIOS. This capability is required to start Windows virtual machines.

You may continue with the installation, though XenServer might have limited functionality until you have addressed these problems.

Ok

Back

<Tab>/<Alt-Tab> between elements ; <Space> selects ; <F12> next screen

Set Static IP

Welcome to XenServer - Version 5.0.0 (#10918p)  
Copyright (c) 2008 Citrix Systems, Inc.

### Networking

Please specify how networking should be configured for the management interface on this host.

Automatic configuration (DHCP)

Static configuration:

IP Address: 10.0.0.200  
Subnet mask: 255.255.255.0  
Gateway: 10.0.0.1

Ok

Back

Identify

<Tab>/<Alt-Tab> between elements ; <Space> selects ; <F12> next screen

Set Hostname and DNS Server

Welcome to XenServer - Version 5.0.0 (#10918p)  
Copyright (c) 2008 Citrix Systems, Inc.

**Hostname and DNS Configuration**

**Hostname Configuration**

Hostname: xenserver5-01

**DNS Configuration**

DNS Server 1: 10.0.0.100

DNS Server 2: \_\_\_\_\_

DNS Server 3: \_\_\_\_\_

**Ok**                      **Back**

<Tab>/<Alt-Tab> between elements    ;    <Space> selects    ;    <F12> next screen

XenServer 5.0.0                      18:44:05                      xenserver5-01

---

Configuration

<p><b>Customize System</b></p> <p><b>Status Display</b></p> <p>Network and Management Interface Authentication Virtual Machines Disks and Storage Repositories Resource Pool Configuration XenServer Details and Licensing Hardware and BIOS Information Keyboard and Timezone Remote Service Configuration Backup, Restore and Update Technical Support Reboot or Shutdown Local Command Shell</p> <p>&lt;Enter&gt; OK &lt;Up/Down&gt; Select</p>	<p>VMware, Inc. VMware Virtual Platform</p> <p>XenServer 5.0.0-10918p</p> <p><b>Management Network Parameters</b></p> <table border="0"><tr><td>Device</td><td>eth0</td></tr><tr><td>IP address</td><td>10.0.0.200</td></tr><tr><td>Netmask</td><td>255.255.255.0</td></tr><tr><td>Gateway</td><td>10.0.0.1</td></tr></table> <p>Press &lt;Enter&gt; to display the SSL key fingerprints for this host</p> <p>&lt;Enter&gt; Fingerprints &lt;F5&gt; Refresh</p>	Device	eth0	IP address	10.0.0.200	Netmask	255.255.255.0	Gateway	10.0.0.1
Device	eth0								
IP address	10.0.0.200								
Netmask	255.255.255.0								
Gateway	10.0.0.1								

#### INSTALL XENCENTER ON ADMIN WORKSTATION

1. Install .NET Framework 2.x
2. Install Citrix XenCenter
3. Connect to XenServer



